

DISIFLUX-35RI EVO PUMP

With sanitation and charging function
for Thermal, Refrigerant, Solar Systems

- Cleaning of sludge in heating and refrigeration circuits
- Loading of film-forming and/or antifreeze additives
- Washing of sanitary facilities



To see the video of the operation
click on the following link

<https://www.facotchemicals.com/risanamento-impianti-termici/>



Functional Principle Information Manual



PRODOTTI CHIMICI E TECNICI - CHEMICAL AND TECHNICAL PRODUCTS

FACOT CHEMICALS Srl Via Crema 44, 26010 Capralba CR, Italy - Tel. +39 0373450642 - info@facot.it - www.facotchemicals.com



CHEMISTRY IN ACTION

DESCRIPTION:

Professional sanitation pump – detergent, heated suitable for cleaning, renovation and disbursement of heating and cooling systems, both conventional and underfloor, of any type of plastic and metal material.

It dissolves sludge, slag and metal oxides as well as mucilage of bacterial origin used in combination with the appropriate products of the T.EM.I.T. Treatment and Maintenance Line for Heating Systems (in particular ANTINEX+Thermakil®, FERRONEX or THERMAKIL as the case may be), preserving the boiler circulator.

The 1.5 kW electric resistance allows the mixture to be preheated, increasing its effectiveness and reducing intervention times. Equipped with an integrated trolley, ideal for residential systems, easy to manoeuvre and operate. Equipped with 2.5 m braided hoses with 3/4" female connections.



In addition to the renovation of the most compromised existing systems, it is also suitable for cleaning new systems and filling solar thermal circuits as per the provisions of the UNI 8065:2019 Technical Standard made mandatory by Ministerial Decree 26 of 2015.

The flow inverter is useful for particularly occluded systems, allowing the circulation of the mixture in both directions, thus increasing the effectiveness of the treatment.

The DISIFLUX-35RI EVO Pump has been built and designed to offer the user minimum dimensions, low weight, easy handling and safety combined with high flow rate and head performance. The structure is made of a single shockproof reinforced polyethylene tank, with a peripheral impeller pump.



CAUTION:

To avoid corrosion and blockages of the impeller, remove as much water as possible from the pump, pipes and tank after use.

The DISIFLUX-35RI EVO pump, despite being built with corrosion-resistant materials, **IS NOT ABLE TO RESIST THE ACTION OF THE ACIDS** used for limescale descaling. In this case, use the pumps of the DISINEX Series specially built in plastic material.

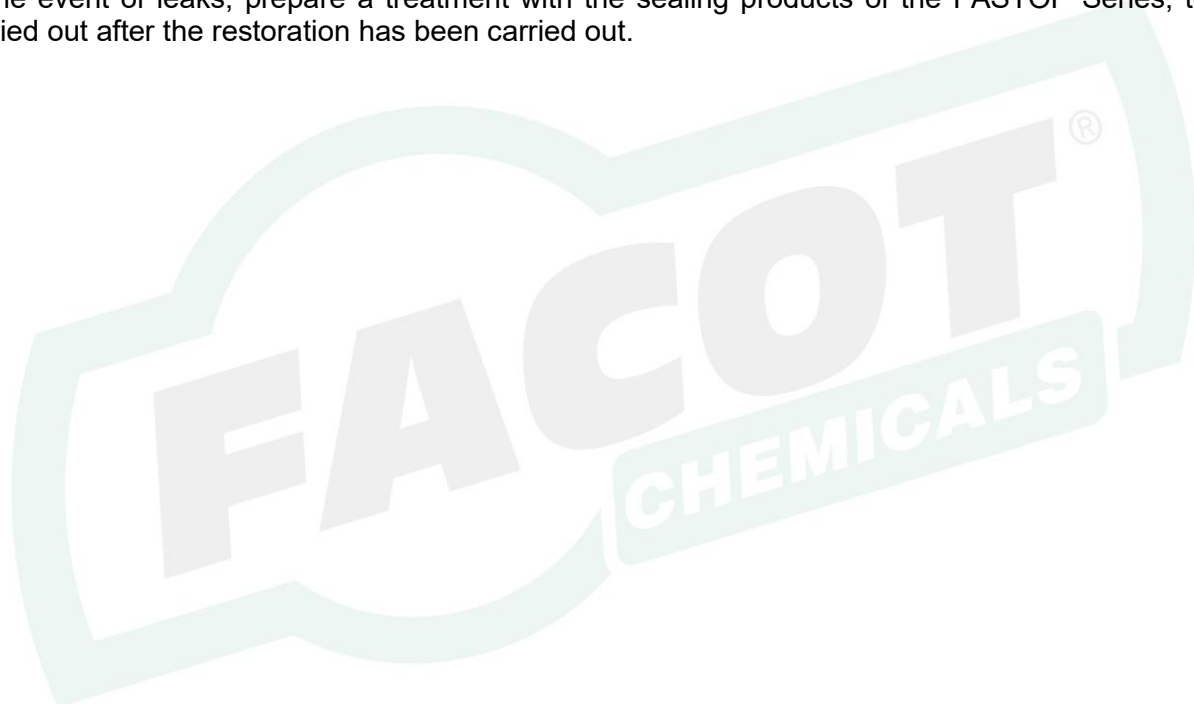
Facot remediation products are non-hazardous products, but it is advisable for their use to comply with the safety rules shown on the packaging and on the appropriate safety data sheets (use gloves – protective apron – goggles and check that the room is well ventilated during operations) that can be downloaded at any time from our www.facotchemicals.com website.

Do not approach the pump when using with lamps or open flames.

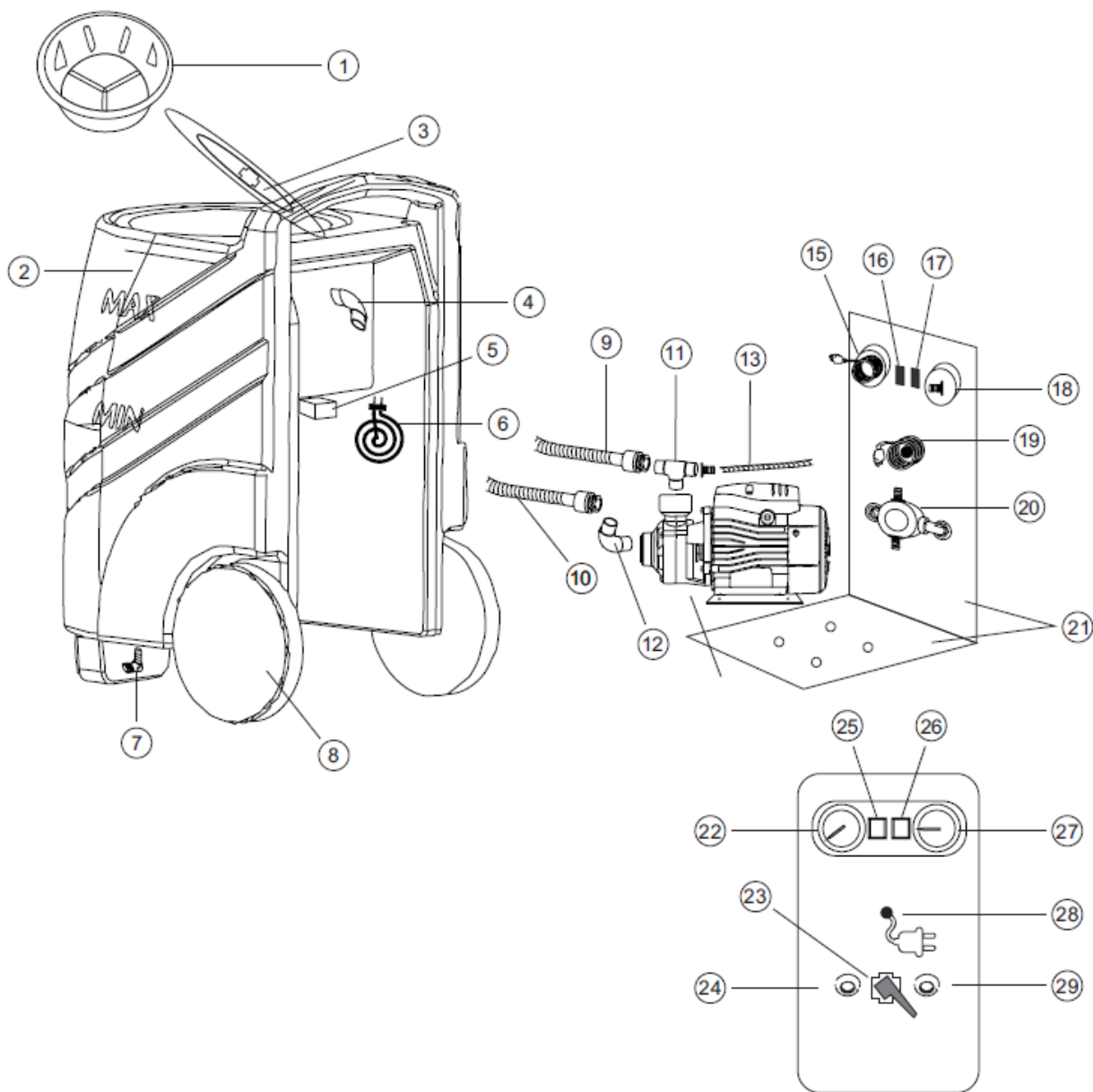
NEVER leave the pump running.

Before carrying out the renovation of the system with the pump, put the latter under pressure in order to assess any leaks caused by corrosion already present in the circuit, typical of dated systems that have never been chemically treated.

In the event of leaks, prepare a treatment with the sealing products of the FASTOP Series, to be carried out after the restoration has been carried out.



Exploded view of DISIFLUX-35RI EVO pump



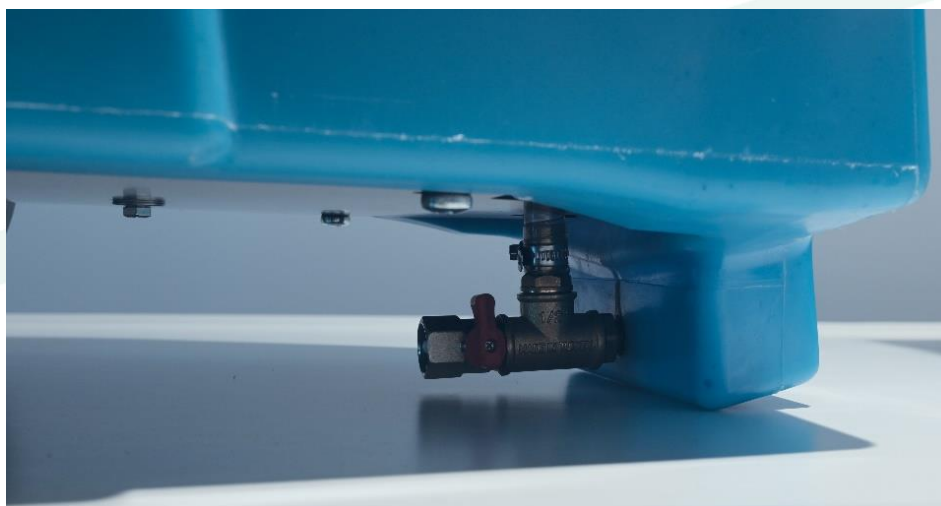
Ref.	Description	Ref.	Description	Ref.	Description
1.	Filter	11.	2-way 3/4" connector	21.	Back and bottom metal panel
2.	Tank	12.	3/4" Elbow	22.	Pressure indicator
3.	Tank cap	13.	Hose	23.	Flow reversal valve
4.	Elbow	14.	Pump	24.	Delivery/return 3/4"
5.	Thermostat	15.	Calorimeter	25.	Pump Switch
6.	Heating element	16.	Pump Switch	26.	Resistance switch
7.	Elbow 1/2"	17.	Resistance switch	27.	Temperature Indicator
8.	Wheel	18.	Pressure gauge	28.	Electrical cable
9.	Connection hose 1/2"	19.	Electrical cable	29.	Delivery/return 3/4"
10.	Connection hose 1/2"	20.	4-way ball valve		



HOW TO USE:

Before inserting the plug into the mains supply, make sure that the ignition switch on the pump is in the off (O) position.

1. Make sure that the supply and return hoses, and their fittings with clamps, connected to the pump, are tight and watertight.
2. Connect the pump's braided delivery pipe to the system downstream of the boiler or directly to the radiator manifold.
3. Connect the pump's return braided hose to the mains water.
4. Connect the return of the system to the drain, or directly into the sewer, with a pipe.
5. Fill the tank with mains water.
6. Operate the pump ignition switch, open the circuit valves, and flush for 10 minutes.
7. Introduce a volume of water into the system equal to about 3 – 5 times that of the circuit, until it comes out clean, this will allow the elimination of a large part of the sludge present in the system.
8. Turn off the pump and close the system valves.
9. Connect the braided pump return hose to the system return, so as to create a closed circuit.
10. Connect a hose to the pump drain valve located under the tank.



DRAIN VALVE

11. Turn on the electrical resistance switch.
12. Add the specific additive (ANTINEX+Thermakil in case[®] of sludge, FERRONEX in case of mild pickling on a new system, or THERMAKIL in case of debacterization of a low-temperature system).
13. Once a temperature of 40 - 50 °C has been reached, reopen the system valves and switch on the pump.
14. Continue the treatment for a few hours (from 2 to 6 depending on the size of the system), keeping one radiator open at a time, starting from the most distant one, normally the most obstructed. Alternate the direction of flow during operations using the appropriate inverter.
15. If the tank is at risk of overflowing, adjust the flow by gradually opening the drain valve.
16. During treatment, clean the filter media frequently as needed.





FILTER MEDIA

17. Once the cleaning is complete, turn off the pump and close the system valves.
18. Reconnect the braided hose of the pump return to the mains water.
19. Reconnect the system return to the drain.
20. Turn on the pump, open the system valves and the mains water tap, in order to introduce more water into the system by draining the removed residues.
21. Connect the braided pump return hose to the system return, so as to create a closed circuit.
22. Load the anti-corrosive additives of the FILMAX series or the required antifreezes of the ATIGEL / ALIGEL series from the tank cap depending on the type of system. In any case, comply with the Guidelines drawn up by Facot in compliance with the UNI 8065:2019 Technical Standard.
23. Once the additives have been added, close the valves and disconnect the pump, taking care not to spill on floors and objects.
24. Adhere to proper pump maintenance as instructed in the manual.

WARNING:

If there is excessive foaming during use, switch off the pump for a short time and dilute the solution with water if necessary.

MAINTENANCE:

Important: after use at the end of the day, provide for a thorough washing of the pump with recirculating water for at least 10 minutes to eliminate the sludge and the sludge dissolve solution. In order to keep all the gears of the pump lubricated over time, it is recommended to treat each end of the wash with a special X10 or GT 7 lubricating spray.

To prevent corrosion and blockage of the impeller, remove as much water as possible from the pump, pipes and tank.



Observe the regulations for the use and disposal of spent solution.
In case of drippings, it is advisable to clean immediately with water rinse.
Avoid wetting the pump motor.

TECHNICAL DATA:

Container	Polyethylene
Tank capacity	35 liters
Pump	Centrifuge
Degree of protection	IPX4
Flow inverter	Manual
Voltage and frequency	220 - 240 V / 50 Hz
Power consumption	650 W / 0.8 HP
Power of electrical resistance	1,500 W
Flow rate	3,800 l/h
Attacks	3/4"
Prevalence	8 m
Maximum pressure	3.6 bar
Maximum temperature	60 °C
Weight	24 kg
Height	65 cm
Length	35 cm
Width	40 cm



WARRANTY CONDITIONS:

The warranty will be considered valid only if the FACOT products of the T.EM.I.T. Treatment and Maintenance of Heating Systems Line are used in the percentages prescribed by the labels and related technical sheets and scrupulously following the provisions of the Facot Guidelines drawn up in compliance with the UNI 8065:2019 Technical Standard made mandatory by Ministerial Decree 26 of 2015 during the use of the pump.

FACOT CHEMICALS SRL guarantees the parts that make up the equipment that are defective for a period of 12 months, provided that the warranty claim is accompanied by a purchase document (bill of lading note or invoice).

LIMITS OF THE WARRANTY:

The warranty is limited to the supply or repair of parts or materials recognized as defective which must be returned carriage paid to the dealer's premises. The warranty does not cover damage resulting from improper use as well as normal operating wear and tear.

The warranty is void if the rules relating to the use of the pump itself are not followed, as well as the maintenance and safety indicated in this manual.

**THE INSULATION MATERIALS AND THE CONSTRUCTION OF THE ELECTRICAL PARTS
COMPLY WITH THE CEI 96-2 - EN 60742 STANDARDS**

Code: PDISFLUX35RI



FACOT CHEMICALS S.r.l.
Via Crema, 44
26010 Capralba - CR
tel. 0373 450642 fax 0373 450751

The data and characteristics indicated in this document do not bind the manufacturer, which reserves the right to make any changes deemed appropriate, without prior notice or replacement.

Last update: 19.03.2026

